



### SUPERVISOR TIME ALLOCATION

Construction supervision is a key factor in project success. Construction supervisors carry a heavy load in both responsibility and expectations. A survey of construction supervisors (1422 responses) revealed a typical day's allocation of time across five general categories as shown in Figure 1. The results also revealed that there was no statistically significant difference in supervisor time allocation across experience level, project management competency or technology competency. Figure 2 shows an optimal time allocation for construction supervisors. These two figures show that construction supervisors spend less time supervising craft professionals than the industry deems optimal as determined by CII RT-330 *Improving Frontline Supervision in Industrial Construction*.

**HOW CONSTRUCTION SUPERVISORS SPEND THEIR TIME (N=1422)**

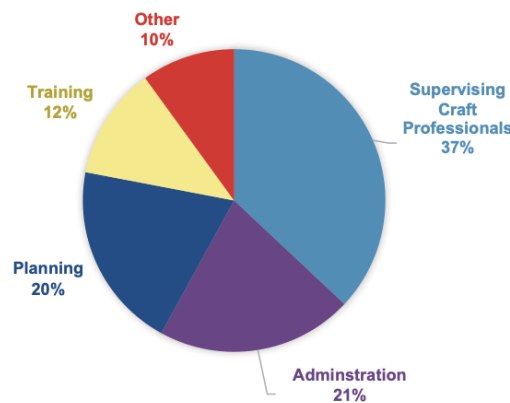


Figure 1: Typical Time Allocation of Construction Supervisors<sup>1</sup>

### OPTIMAL SUPERVISOR TIME ALLOCATION

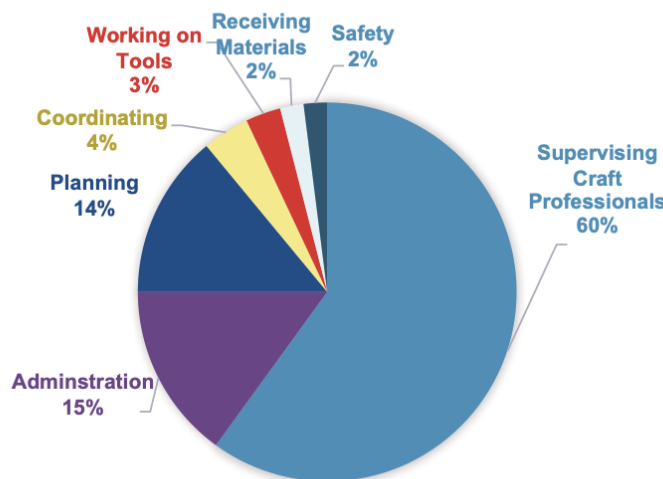


Figure 2: Optimal Construction Supervisor Time Allocation<sup>2</sup>

<sup>1</sup> See Construction Industry Institute RT-370 for additional detail <https://www.construction-institute.org/resources/knowledgebase/knowledge-areas/result/topics/rt-370>

<sup>2</sup> See Construction Industry Institute RT-330 for additional detail <https://www.construction-institute.org/resources/knowledgebase/knowledge-areas/construction-execution/topics/rt-330>